



Delta Financial Group
Investment Philosophy

Table of contents

- 3** Introduction
- 4** Investor behaviour is the key determinant to the achievement of goals
- 7** Asset allocation is the primary portfolio decision
- 8** Broad diversification is crucial
- 9** Low cost is a critical success factor
- 11** Performance
- 12** Investment Committee
- 13** Regular portfolio balancing reduces risk
- 14** Education and a disciplined approach improves returns
- 15** Frequently Asked Questions

Introduction — Our Investment philosophy

A major part of what we do at Delta Financial Group involves the investment of our clients' money, whilst we also spend a lot of time on tax strategy, asset protection, retirement planning and client structures — things that can be termed 'traditional financial planning' — such as the investment of accumulated assets, remains central to helping clients achieve their financial objectives.

The benefits to you

We understand that providing clients with direct stock exposure has clear transparency benefits and flexibility when managing their tax positions while investing through managed funds gives us access to superior investment professionals. We understand that in some markets passive "index" exposure suits while in other markets active management can add substantial value.

Why choose us

At Delta Financial Group we tailor individual solutions for every client in recognition of the fact that every client is different and has particular investment needs. However while there is no "one size fits all" investment solution, every tailored solution is built on a solid investment framework and this document aims to explain that framework and inform our community how we construct investment portfolios.

For us, successful investing is about getting the big decisions right. This means making sure our clients are invested in the correct asset classes that correspond with their goals and objectives.

The Core-Satellite approach

Delta Financial Group's core-satellite philosophy is a common sense investment approach that combines the benefits of index funds — lower cost, broader diversification, tax efficiency and lower volatility — with actively managed funds or other direct investments offering potential for outperformance. It involves using index funds as the core of an investor's portfolio and selecting actively managed investments or direct shares as the satellites.

Core-satellite brings greater discipline and stability when compared to an actively managed investment portfolio by:

- substantially reducing reliance on 'picking winners' or chasing fund manager returns;
- providing greater portfolio diversification;
- potentially improving after-tax returns by taking maximum advantage of capital gains discounts; and
- reducing overall fund management and transaction costs.

Core investments are broad based, low cost investments that capture the overall performance of the market and form the foundation (and majority) of a stable portfolio (i.e. Index Funds) and is used to:

- capture market performance
- reduce investment costs
- create a stable portfolio foundation

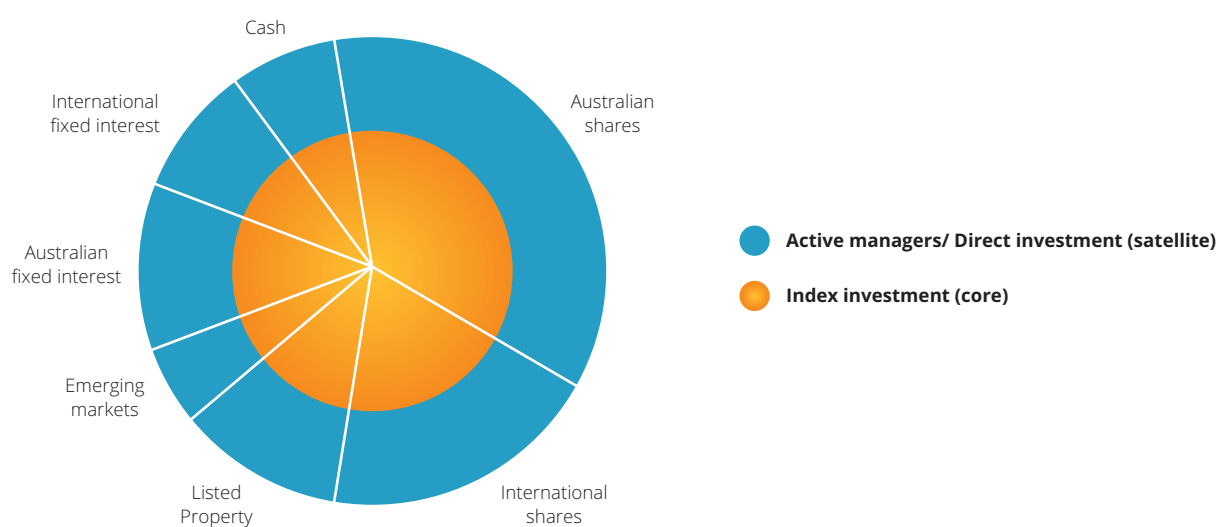
Satellite investments represent a smaller allocation of funds in each asset class and are designed to capture market opportunities and offer the potential for higher investment returns and is used to:

- add the opportunity for out-performance
- add portfolio tilts in areas that add value, ie; higher income
- employ your investment dollar where you can add value

Even more importantly, is that countless studies have concluded that very few managers have the ability to beat the financial market over the long term.

Choosing the right mix

The index and active combinations within your core-satellite portfolio will depend on several factors, but should generally start with the index allocation to capture market-linked returns at low cost. Once your foundation is in place, active funds or direct shares can be added where significant confidence exists in sustained outperformance after costs and taxes.



Note: Asset allocations in this diagram are intended to be an example only and not a recommendation.

Why we use indexing at the core of the investments

An index is a group of securities designed to represent a broad market or a portion of the broad market. There are indexes measuring the investment results of all major markets and asset classes. An index fund invests in all or a representative sample of the securities of the index it tracks.

Investing in a broadly diversified index fund will ensure investment returns reflect the market performance of the underlying asset class. There is a low risk that returns will deviate substantially from the index benchmark and favourable odds of realising market returns over time. Simply stated, the return from indexing is market performance minus costs — and the costs of indexing are low.

With active management, the investor is seeking enhanced returns compared with the market in a disciplined fashion, after all costs. Any excess market returns can make a difference to the value of a portfolio when compounded over time.

Incorporating an index fund as the 'core' of a portfolio offers several benefits:

Low costs: Index funds have lower ongoing fees and transaction costs than most active funds investing in similar assets.

Lower transaction costs: Index funds have a low portfolio turnover as they tend to buy-and-hold securities for longer periods to track the index. Lower portfolio turnover results in low ongoing transaction costs. Transaction costs can include brokerage, commissions, stamp duty, custody and other expenses associated with trading securities.

Tax efficiency: An index management approach minimises portfolio turnover so investors can take advantage of available capital gains tax concessions.

Diversification: An index fund gives access to a broad spread of securities that make up a market index. Portfolio diversification means less exposure to the performance fluctuations of individual securities, moderating overall volatility.

Transparency: An index fund is designed to track an index and therefore allows greater control and transparency over a portfolio's risks.

The 'core' fund manager

Vanguard Investments Australia Ltd is Delta Financial Group's chosen provider of index fund solutions and exchange-traded funds.

Vanguard Investments Australia Ltd is a wholly owned subsidiary of The Vanguard Group, Inc. With more than AUD \$3 trillion in assets under management as of 30 September 2014, including more than AUD \$460 billion in ETFs, Vanguard is one of the world's largest global investment management companies. In Australia, Vanguard has been serving financial advisers, retail clients and institutional investors for more than 17 years.

Vanguard's index management approach

Vanguard employs efficient indexing strategies to minimise portfolio turnover and transaction costs. Vanguard understands what aspects of fund performance can be controlled and diligently implements tax-efficient strategies and operational efficiencies to keep management costs low. This approach helps to maximise investors' after-tax returns.

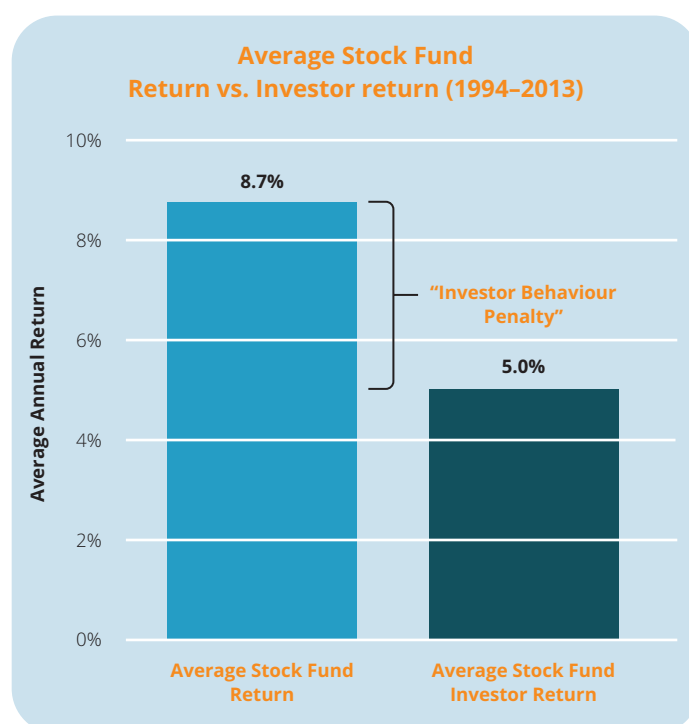
Investor behaviour is the key determinant to achievement of goals

A study by US financial services research group Dalbar shows how ruinous investor's poor investment behaviour can be to their wealth creation. In the 20 years to 31 December 2013, Dalbar computed the "average stock fund investor return" by using industry cash flow reports from the Investment Company Institute. The "average stock fund return" figures represented the average returns listed in Lipper's US Diversified Equity fund classification model.

The average stock FUND return was 8.70%p.a. but the average stock fund investor return was 5.0%! This 3.7% return differential compounded over the 20 year period would have had a HUGE effect on the investor's total return.

Dalbar concluded that investor returns are markedly different from the returns promoted by fund managers because most people try to time their entry and exit points — and often get it wrong, often selling out of their investments in volatile periods and re-investing after most of the gains had been made.

A close relationship with a quality financial adviser can steer you away from these very common behavioural mistakes, help you avoid destroying investment returns, making sure you achieve your investment goals.



Source: *Quantitative Analysis of Investor Behaviour* by Dalbar, Inc. (March 2014) and Lipper. Dalbar computed the "average stock fund investor return" by using industry cash flow reports from the Investment Company Institute. The "average stock fund return" figures represent the average return for all funds listed in Lipper's U.S. Diversified Equity fund classification model. Dalbar also measured the behaviour of an "asset allocation" investor that uses a mix of equity and fixed income investments. The annualised return for this investor type was 2.5% over the time frame measured. All Dalbar returns were computed using the S&P 500® Index. Returns assume reinvestment of dividends and capital gain distributions. The fact that buy and hold has been a successful strategy in the past does not guarantee that it will continue to be successful in the future. The performance shown is not indicative of any particular Davis investment. **Past performance is not a guarantee of future results.**

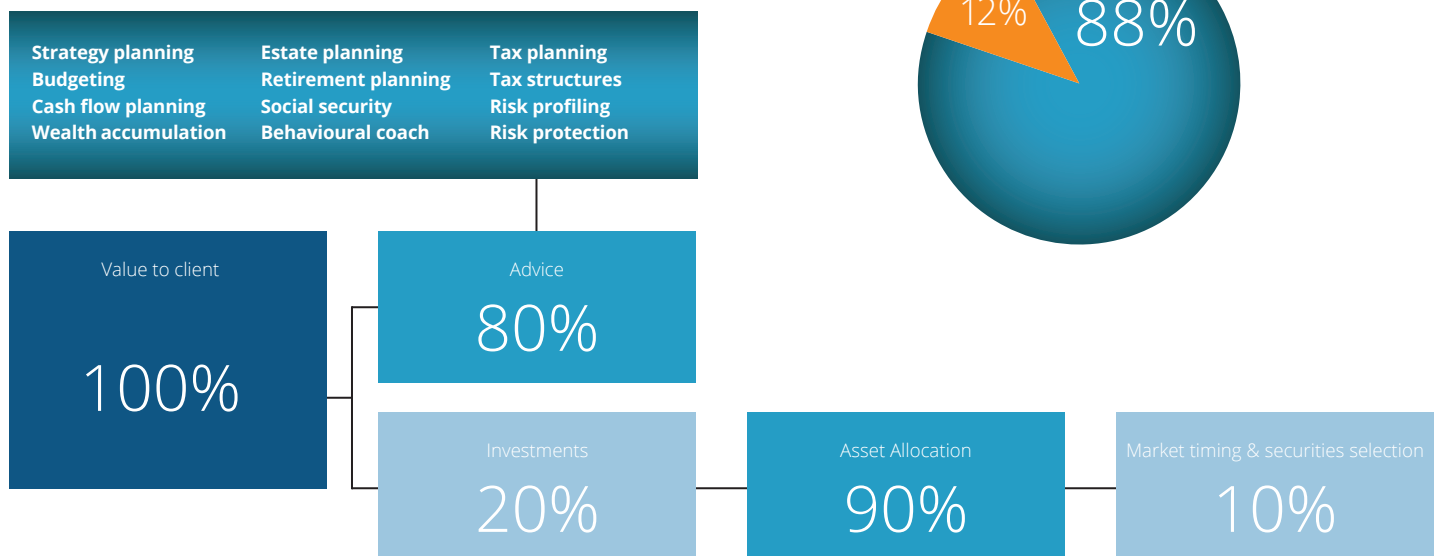
Asset Allocation is the primary portfolio decision

Delta Financial Group believes that the asset allocation decision — which takes into account each investor’s risk tolerance, time horizon, and financial goals — is the most important decisions in the portfolio construction process.

This is because asset allocation is the major determinant of risk and return for a given portfolio. Over time, as asset classes produce different returns, the portfolio weights will move from its target asset allocation. This changes the risk and return characteristics to an allocation that may be inconsistent with an investor’s goals and preferences. Studies have shown that your chosen asset allocation is responsible for more than 90% in the variability of returns between portfolios.

The diagram opposite illustrates the results of research recently conducted which confirms strong support of that theory — Investment outcomes are largely determined by the long term mixture of assets in a portfolio.

A seminal study by the Institute of Actuaries examined the key drivers of value over an average term of a relationship — whilst it was clear that strategic advice was the predominate component of value creation, however with regard to the investment piece of the jigsaw, asset allocation formulation was the key component.



Source: "The Value of Advice", The Institute of Australian Actuaries Forum and Vanguard calculations, using data from Morningstar, Inc., as at 31 December 2011

Broad Diversification is crucial

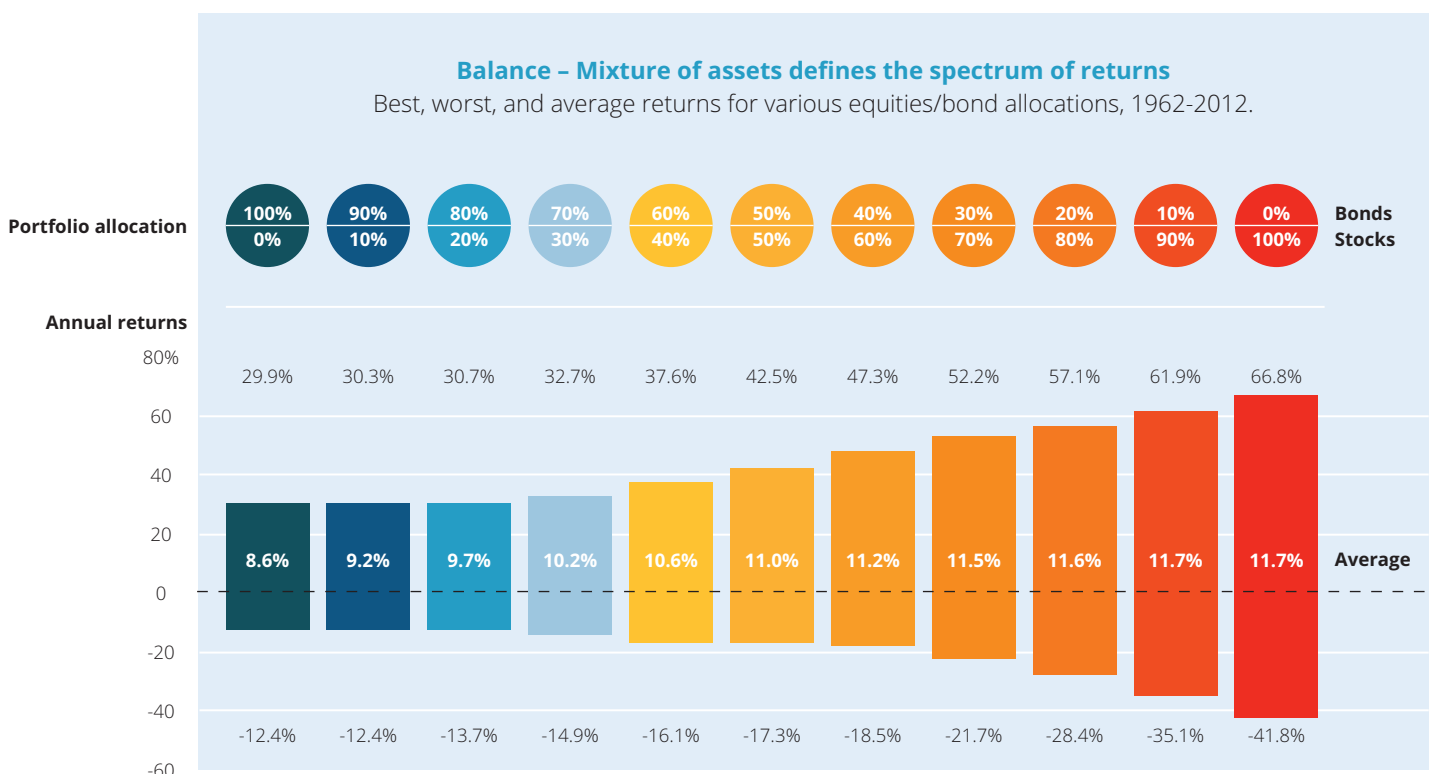
Following implementation of our investment philosophy clients have the following diversification characteristics to help manage their investment risk in line with their tolerance:

Diversification across asset classes

The various asset classes – shares, private markets, property, bonds and cash – perform differently under different economic and market conditions. The proposed portfolio is diversified across a range of asset classes to reduce the impact of downward fluctuations in any one asset class over the short term, yet still capture the benefits of potentially higher returns from growth assets like shares over the long term.

Diversification across investment management styles

Investment management companies with different investment management styles tend to excel at different times under different economic and market conditions. The proposed portfolio combines a range of investment managers with complementary investment styles, using sophisticated techniques to neutralise unintended style biases in each asset class, and to ensure that diversification of management styles actually results in diversification of underlying investments.



Source: Credit Suisse, "Credit Suisse Global Investment Returns Yearbook 2013", data used by Credit Suisse and in our chart are originally sourced from Dimson, Marsh and Staunton, London Business School, "Triumph of the Optimists".

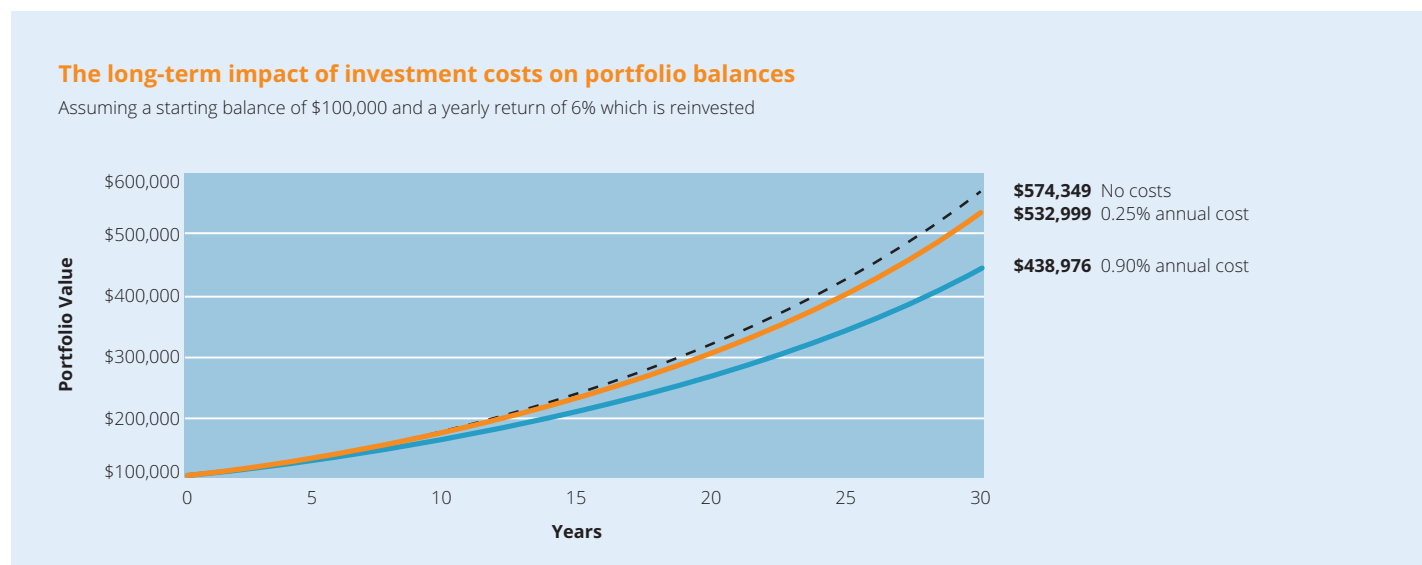
Low cost is a critical success factor

Costs are a pervasive feature of the investment management industry and can take the form of management expenses or other related fees applied to investors' capital as it changes through time. Cost is therefore a drag on net performance. In contrast to the uncertainty about future returns on securities and asset classes that characterises financial matters, minimising costs is a certain way for managers to influence investment performance in a positive manner.

Access to a manager that obtains the market return at a very low cost is an essential building block of our firm's investment philosophy.

Investors can't control the markets, but they can control how much they are willing to pay.

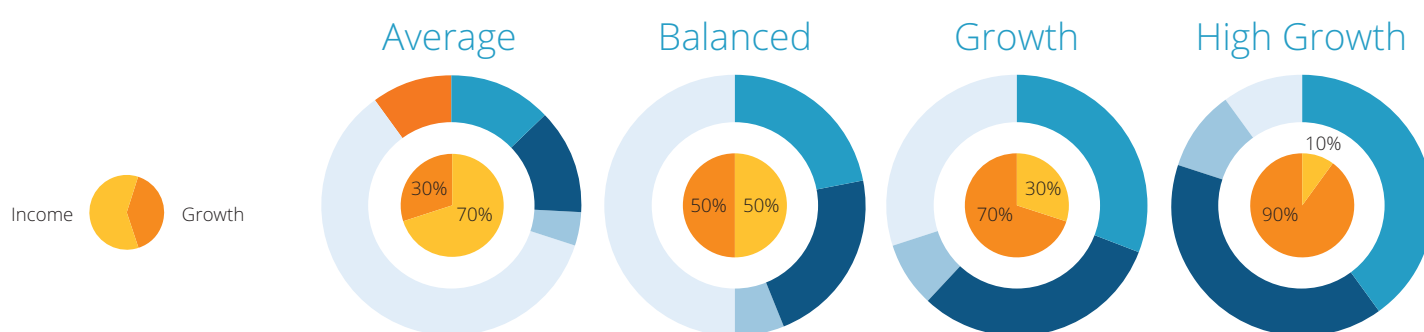
Every dollar that investors pay for management fees or trading commissions is a dollar less of potential return. In addition, our experience has been that, historically, lower-cost investments have tended to outperform higher cost alternatives in the long term.



Note: The portfolio balances shown are hypothetical and do not reflect any particular investment. The final account balances do not reflect any taxes or penalties that might be due upon distribution. Source: Vanguard.

A low cost diversified portfolio — an excellent foundation for an investment portfolio

A great way to access the full power of the asset allocation story is by holding a broadly diversified low cost index fund. The four funds illustrated below would each commonly hold more than 7000 equity securities and over 12000 fixed interest securities giving investors the comfort of a huge amount of diversification.



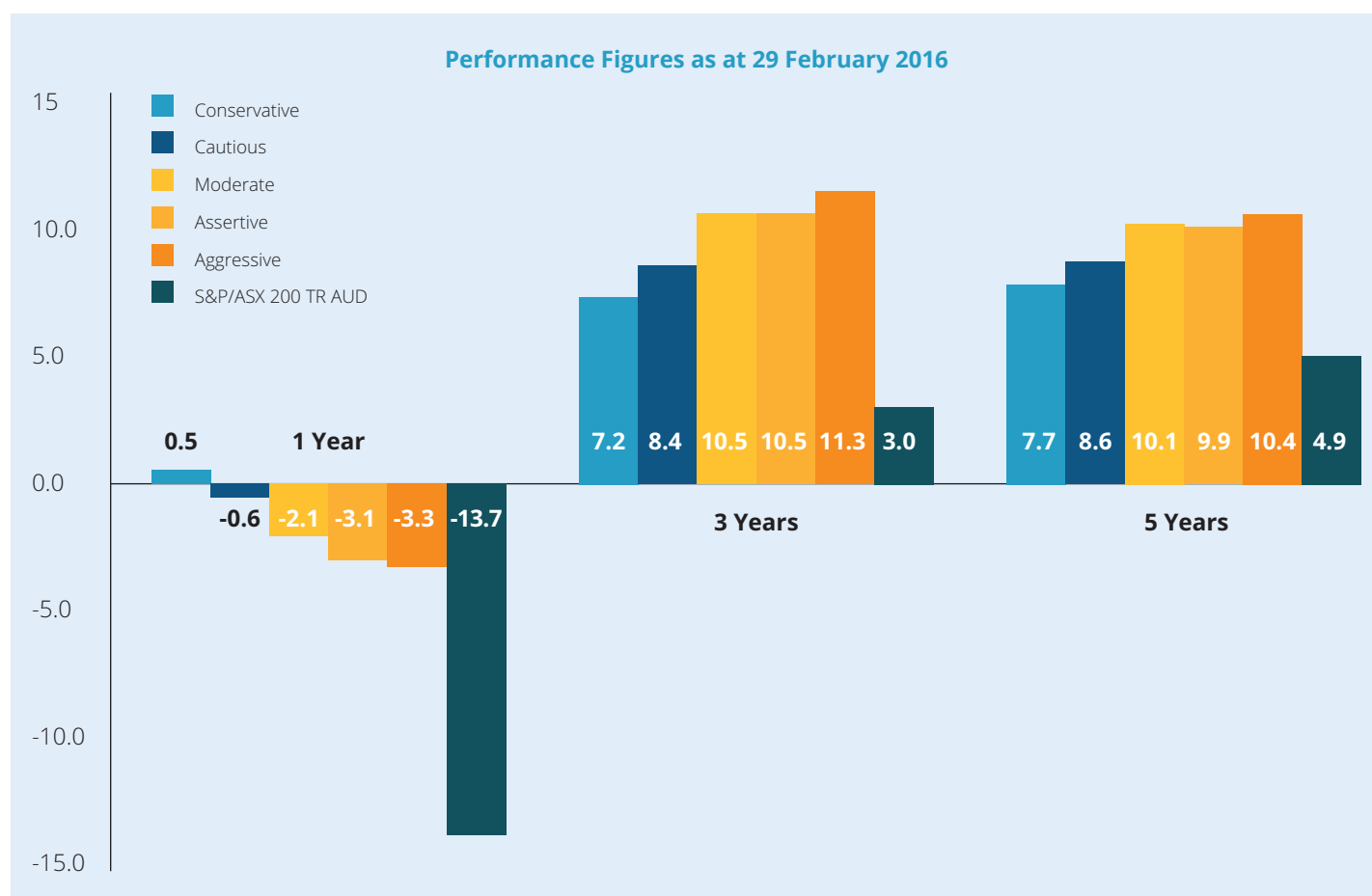
Asset Allocations	Vanguard® Conservative Index Fund	Vanguard® Balanced Index Fund	Vanguard® Growth Index Fund	Vanguard® High Growth Index Fund
Australian Shares	13	22	31	40
International Shares	13	22	31	40
Property	4	6	8	10
Fixed Interest	60	50	30	10
Cash	10	0	0	0

The reasons we recommend that our clients invest in a core holding of diversified index funds are:

- 1. Cost advantages:** Lower management and transaction costs.
- 2. Diversification:** A broader spread of securities which means less exposure to the performance fluctuations of single investments.
- 3. Ease of management:** Indexing provides consistent performance resulting in greater stability of your portfolio, making on-going portfolio management much easier.
- 4. Tax Efficiencies:** Index fund managers typically turn their portfolios over less often than active managers.
- 5. Risk control:** Consistent returns mean a low level of volatility.

Performance

Below performance is since inception of Delta Financial Group in March 2011.



Important information

The risks

Like any investment, there are a number of risks involved with investing. These risks include, but are not limited to: market risk, volatility risk, security specific and concentration risk, currency risk, investment manager risk, liquidity risk, interest rate risk, change of law as well as other statutory and trading restrictions.

Disclaimer

The information in this document is general information only and does not take into account your personal objectives, financial situation or needs. We strongly recommend you do not act on any information provided in this document without individual advice from your Delta Financial Group adviser.

Investment Committee

The managers included in your proposed portfolio have a dedicated team of in-house investment professionals constantly researching, monitoring and managing a combination of the world's specialist investment management companies.

These managers have specific mandates to manage money in a particular way to maximise their complementary styles. In addition, active specialist managers are encouraged to remain true to their investment style and take active positions, changing exposures to countries, industries and stocks in order to increase returns or provide a defence against downward price movements.

In addition to the managers, we have formed an Investment Committee who are a collection of leading industry experts, portfolio managers and financial advisers who meet every 6 months to review our philosophy.

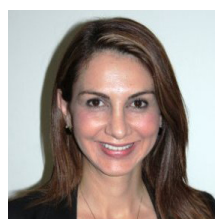


Mike Sikar

B.Business, Grad Dip App Fin, ADFP, ADA2 ASX, SMSF SAA

Founder & Principal Financial Adviser of Delta Financial Group.

18 years experience, 10 years in stockbroking and 8 years in financial planning, founding Delta Financial Group in 2011.



Julie Scurfield

Master's Applied Finance (FP)

National Manager at Vanguard 23 year's experience in the investment markets.



Ray Lenton

D Stockbroking, DFS, ADA2 ASX

Partner & Portfolio Manager Equities at Morgans Financial Limited.

14 years experience with Morgans & accreditations in Value Investing & Derivatives.



Jack Mann

B.Business Grad Dip App Fin

Business Development Manager at Magellan Financial Group.

5 years experience with Magellan.



Lachlan Hay-Hendry

Masters degree Applied Finance

Investment Specialist at NAB Asset Management.

8 years experience with NAB.

Regular portfolio rebalancing reduces risk

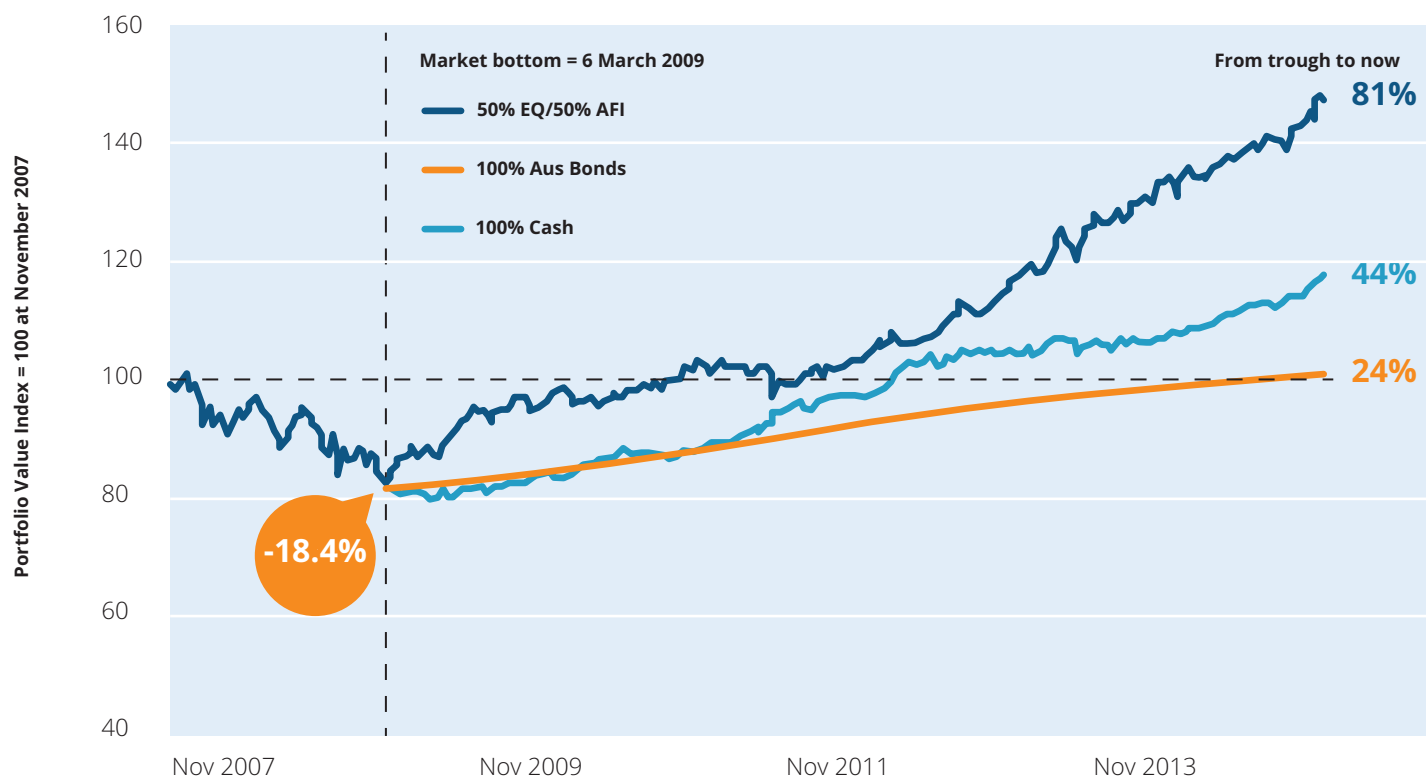
In many ways we see this as the most important function. Regular rebalancing back to our calculated asset allocation and style ensures that the plan we put in place for you initially is adhered to and given a chance to work over a long period of time.

Portfolio rebalancing helps investors to maintain their target asset allocation. By periodically rebalancing, investors can diminish the tendency for “portfolio drift,” and thus potentially reduce their exposure to risk relative to their target asset allocation. Annual or semi-annual monitoring, with rebalancing at 5% thresholds, is likely to produce a reasonable balance between risk control and cost minimisation for most investors. Annual rebalancing is likely to be preferred when taxes or substantial time/costs are involved.

It is not sufficient to just set a target asset allocation. You have to constantly review and ensure the asset allocation is being maintained through time. For example, if shares perform better than the other assets in your portfolio, your actual allocation to shares will increase above your target asset allocation.

With disciplined rebalancing, an annually rebalanced portfolio provides lower volatility and a higher return. This also means you are never exposed to risks you had not agreed to when you first invested.

Your portfolio is reviewed by us on a regular basis. As part of our ongoing service offering we undertake monitoring of the portfolio and regular due diligence of the underlying investment managers within it.



Education and a disciplined approach improves returns

One of the main reasons we have prepared this Investment Philosophy Document is so clients understand our investment philosophy, how we create the portfolios and the risks that provide the expected return. The way to capture the expected returns from the risk factors is to remain disciplined to ensure you capture the returns when they are there and to hold your nerve by staying the course when they aren't.

We write this document with the hope that our existing clients and future clients will better understand how we manage money, how we are different from the mainstream institutions and also the value of this approach. As we outlined above, this document is by no means static and we encourage clients to challenge our business on any of the decisions set out in this document because we find that only by continually challenging and evolving this investment process are we able to produce the best results for clients.

“The biggest obstacle to reaching our long-term goals often is not the market itself, but our own behaviour.”

Mike Sikar

General Advice Warning & Core Disclosures

Any advice in this publication is of a general nature only and has not been tailored to your personal circumstances. Please seek personal advice prior to acting on this information. Before making a decision to acquire a financial product, you should obtain and read the Product Disclosure Statement (PDS) relating to that product. Past performance is not a reliable guide to future returns. The information in this document reflects our understanding of existing legislation, proposed legislation, rulings etc. as at the date of issue. In some cases the information has been provided to us by third parties. While it is believed the information is accurate and reliable, this is not guaranteed in any way. Opinions constitute our judgement at the time of issue and are subject to change. Neither, the Licensee or any of the National Australia group of companies, nor their employees or directors give any warranty of accuracy, nor accept any responsibility for errors or omissions in this document.

Delta Financial Group Pty Limited and Mike Sikar, ACN 148 831 038, is an Authorised Representative of GWM Adviser Services Limited, ACN 002 071 749, an Australian Financial Services Licensee with its registered office at 105 Miller Street North Sydney NSW 2060.

For more information, you can find interviews with our portfolio managers, market updates and product disclosure statements on our website at www.deltafinancialgroup.com.au

© 2016 Delta Financial Group

Frequently asked questions

Investing is for meeting long-term goals; saving is for short term goals.

Money that investors may need in the short term (2 years or less) should be kept in short term investments which protect capital. These include money market funds (a fund that invests in short term financial instruments such as cash), bank accounts, or government bonds (gilts). Clients should only consider investments in the stock market or corporate bonds when they have money to put away to help meet a longer term objective.

Broad diversification, with exposure to all parts of the stock and bond markets, reduces risk.

If an investment portfolio does not fairly reflect the overall investment market in terms of balanced asset allocation (the process of dividing investments amongst different asset classes such as stocks, bonds and cash) and investment style (such as growth or value), we believe clients are taking additional risk. We judge that this is unlikely to pay off over the long term.

An investor's most important decision is selecting the mix of assets to be held in a portfolio, not selecting the individual investments themselves.

Deciding on the mix and proportion of stocks, bonds and cash in a portfolio is critically important — much more so than deciding on individual assets or funds. To work out the asset allocation that's best for each individual, investors need to consider factors such as their financial needs, their tolerance of risk and the length of time they want to invest.

Consistently outperforming the financial markets is extremely difficult.

Economic uncertainties, random market movements and the rise and fall of individual companies mean it is extremely difficult for anyone — including professional investors — to beat the market in the long term. An active manager buys or sells shares (or bonds) in order to meet a particular investment objective. Therefore, actively managed funds typically have higher operating and transaction costs which can eat into returns. So we believe it makes sense to begin by considering funds that follow the index.

Minimising cost is vital for long term investment success.

Costs matter a great deal because investment returns are reduced dollar for dollar by the fees, commissions, transaction expenses and any taxes incurred. Investors as a group earn somewhat less than the market return are subtracting all those costs. Therefore, by minimising costs, investors improve their odds of meeting their investment objectives.

Investors should know how each investment fits into their plans, and why they own that particular asset.

Investors need to be clear why they own each particular investment. Knowing the characteristics of each investment and the role it plays in a diversified portfolio increases investors changes of selecting suitable investments that can be held for the long term.

Risk has many dimensions and investors should weigh 'shortfall risk' — the possibility that a portfolio will fail to meet longer term financial goals — against 'market risk' or the change that returns will fluctuate.

In the long run, what matters most is whether your investments enable you to meet your objectives. Earning enough to meet objectives is much more important than whether investments suffer interim declines or trail a market benchmark. But many investors react only to market risk. They may bulk up on stocks during when markets are doing well, taking on more market risk than they realise. Conversely, they're tempted to reduce allocations in stocks in response to market downturns. In truth, to achieve long range goals, most investors need to accept some level of risk from equities.

Market timing and performance chasing are losing strategies.

Market-timers who buy and sell frequently, hoping to 'catch the wave' as securities rise and fall, need to be very sure that their timing is right. Otherwise, they stand to lose money from market movements while also paying significant transaction costs. As many investors say; its time in the markets that counts, not timing the markets. Also, market fashions change — often very suddenly. There is no guarantee that a performance chasing strategy, asset class (a type of investment such as stocks, bonds or cash) or fund that has performed well will continue to perform well next year, next month — or even tomorrow.

An investor should not expect future long term returns to be significantly higher or lower than long term historical returns for various asset classes and subclasses.

The major asset classes (equities, bonds, cash investments) have long histories and well established risk/reward characteristics. When estimating future returns for asset classes or sub-asset classes, long term historical returns are a good place to start. Vanguard expects that returns from various subclasses of the stock market will be similar to each other over long periods. Also, Vanguard expects that long term return for equities will be higher than that for bonds, and that bond returns will, in turn, exceed returns on cash investments over long periods.

However investors should always remember that no method for predicting market returns is perfect. Past performance is not a reliable indicator for future results.